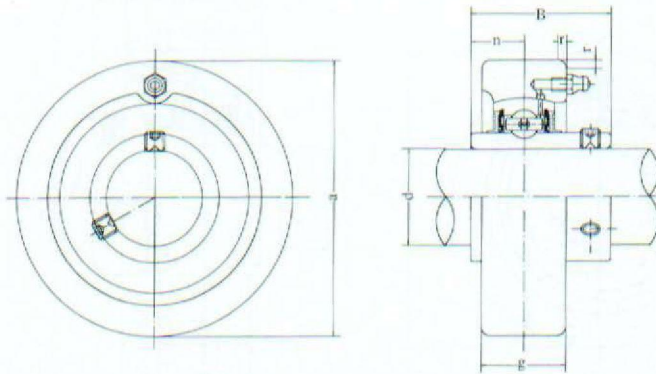


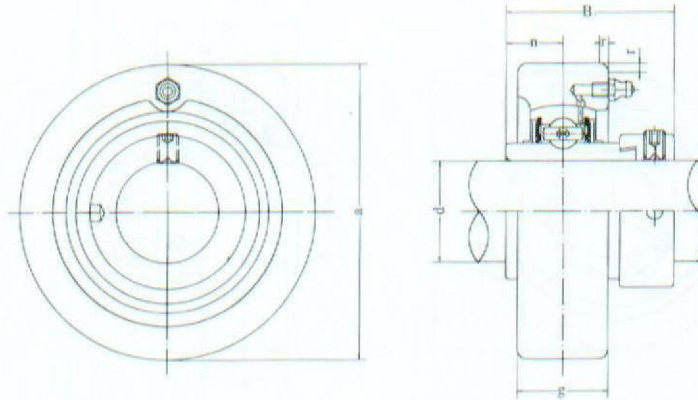
Cartridge Units

UCC2 (Normal-duty)



Unit No.	Dimensions <small>mm in.</small>						Bearing No.	Housing No.	Weight (kg)
	d	a	g	r	B	n			
UCC201	12	72	20	2	31	12.7	UC201	C204	0.52
UCC201-8	1/2	2.8346	25/32	0.079	1.2205	0.500	UC201-8		0.51
UCC202	15	72	20	2	31	12.7	UC202	C204	0.51
UCC202-9	9/16	2.8346	25/32	0.079	1.2205	0.500	UC202-9		0.51
UCC202-10	5/8						UC202-10		0.51
UCC203	17	72	20	2	31	12.7	UC203	C204	0.50
UCC203-11	11/16	2.8346	25/32	0.079	1.2205	0.500	UC203-11		0.49
UCC204	20	72	20	2	31	12.7	UC204	C204	0.48
UCC204-12	3/4	2.8346	25/32	0.079	1.2205	0.500	UC204-12		0.48
UCC205	25	80	22	2	34.1	14.3	UC205	C205	0.63
UCC205-13	13/16						UC205-13		0.67
UCC205-14	7/8	3.1496	55/64	0.079	1.3425	0.563	UC205-14		0.66
UCC205-15	15/16						UC205-15		0.64
UCC205-16	1						UC205-16		0.63
UCC206	30	85	27	2	38.1	15.9	UC206	C206	0.80
UCC206-17	1-1/16						UC206-17		0.83
UCC206-18	1-1/8	3.3465	1-1/16	0.079	1.5000	0.626	UC206-18		0.82
UCC206-19	1-3/16						UC206-19		0.80
UCC206-20	1-1/4						UC206-20		0.79
UCC207	35	90	28	2	42.9	17.5	UC207	C207	0.93
UCC207-20	1-1/4						UC207-20		0.99
UCC207-21	1-5/16	3.5433	1-7/64	0.079	1.6890	0.689	UC207-21		0.96
UCC207-22	1-3/8						UC207-22		0.93
UCC207-23	1-7/16						UC207-23		0.90
UCC208	40	100	30	2.5	49.2	19	UC208	C208	1.22
UCC208-24	1-1/2	3.9370	1-3/16	0.098	1.9370	0.748	UC208-24		1.26
UCC208-25	1-9/16						UC208-25		1.23
UCC209	45	110	31	2.5	49.2	19	UC209	C209	1.49
UCC209-26	1-5/8						UC209-26		1.59
UCC209-27	1-11/16	4.3307	1-7/32	0.098	1.9370	0.748	UC209-27		1.55
UCC209-28	1-3/4						UC209-28		1.51
UCC210	50	120	33	2.5	51.6	19	UC210	C210	1.90
UCC210-29	1-13/16						UC210-29		2.02
UCC210-30	1-7/8	4.7244	1-19/64	0.098	2.0315	0.748	UC210-30		1.97
UCC210-31	1-15/16						UC210-31		1.92
UCC210-32	2						UC210-32		1.88
UCC211	55	125	35	2.5	55.6	22.2	UC211	C211	2.18
UCC211-32	2						UC211-32		2.33
UCC211-33	2-1/16	4.9213	1.3/8	0.098	2.1890	0.874	UC211-33		2.27
UCC211-34	2-1/8						UC211-34		2.22
UCC211-35	2-3/16						UC211-35		2.16
UCC212	60	130	38	2.5	65.1	25.4	UC212	C212	2.52
UCC212-36	2-1/4						UC212-36		2.65
UCC212-37	2-5/16	5.1181	1-1/2	0.098	2.5630	1.000	UC212-37		2.57
UCC212-38	2-3/8						UC212-38		2.50
UCC212-39	2-7/16						UC212-39		2.43
UCC213	65	140	40	3	65.1	25.4	UC213	C213	2.98
UCC213-40	2-1/2	5.5118	1-37/64	0.118	2.5630	1.000	UC213-40		3.07
UCC213-41	2-9/16						UC213-41		2.98

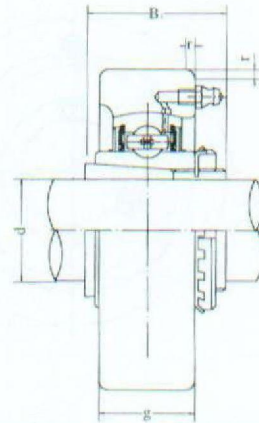
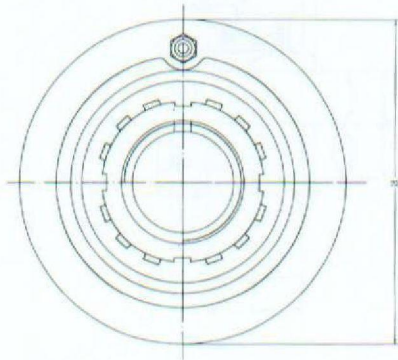




Unit No.	Dimensions <sup>mm</sup> <sub>in.</sub>						Bearing No.	Housing No.	Weight (kg)
	d	a	g	r	B <sub>1</sub>	n			
HCC204	20	72	20	2	43.7	17.1	HC204	C204	0.55
HCC204-12	3/4	2.8346	25/32	0.079	1.720	0.673	HC204-12		0.55
HCC205	25	80	22	2	44.4	17.5	HC205	C205	0.70
HCC205-13	13/16						HC205-13		0.75
HCC205-14	7/8	3.1496	55/64	0.079	1.748	0.689	HC205-14		0.74
HCC205-15	15/16						HC205-15		0.72
HCC205-16	1						HC205-16		0.70
HCC206	30	85	27	2	48.4	18.3	HC206		C206
HCC206-17	1-1/16						HC206-17	0.98	
HCC206-18	1-1/8	3.3465	1-1/16	0.079	1.906	0.720	HC206-18	0.95	
HCC206-19	1-3/16						HC206-19	0.93	
HCC206-20	1-1/4						HC206-20	0.90	
HCC207	35	90	28	2	51.1	18.8	HC207	C207	
HCC207-20	1-1/4						HC207-20		1.12
HCC207-21	1-5/16	3.5433	1-7/64	0.079	2.012	0.740	HC207-21		1.08
HCC207-22	1-3/8						HC207-22		1.05
HCC207-23	1-7/16						HC208-23		1.02
HCC208	40	100	30	2.5	56.3	21.4	HC208		C208
HCC208-24	1-1/2	3.9370	1-3/16	0.098	2.217	0.843	HC208-24	1.42	
HCC208-25	1-9/16						HC208-25	1.38	
HCC209	45	110	31	2.5	56.3	21.4	HC209	C209	1.66
HCC209-26	1-5/8						HC209-26		1.77
HCC209-27	1-11/16	4.3307	1-7/32	0.098	2.217	0.843	HC209-27		1.72
HCC209-28	1-3/4						HC209-28		1.68
HCC210	50	120	33	2.5	62.7	24.6	HC210		C210
HCC210-29	1-13/16						HC210-29	2.24	
HCC210-30	1-7/8	4.7244	1-19/64	0.098	2.469	0.969	HC210-30	2.18	
HCC210-31	1-15/16						HC210-31	2.12	
HCC210-32	2						HC210-32	2.06	
HCC211	55	125	35	2.5	71.4	27.8	HC211	C211	
HCC211-32	2						HC211-32		2.59
HCC211-33	2-1/16	4.9213	1-3/8	0.098	2.811	1.094	HC211-33		2.51
HCC211-34	2-1/8						HC211-34		2.44
HCC211-35	2-3/16						HC211-35		2.36
HCC212	60	130	38	2.5	77.8	31	HC212		C212
HCC212-36	2-1/4						HC212-36	3.02	
HCC212-37	2-5/16	5.1181	1-1/2	0.098	3.063	1.220	HC212-37	2.93	
HCC212-38	2-3/8						HC212-38	2.88	
HCC212-39	2-7/16						HC212-39	2.76	

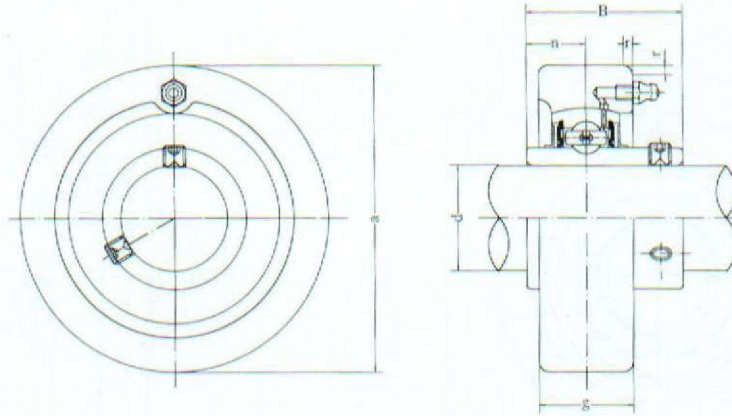
**Cartridge Units**  
(with adapter mounted)

**UKC2** (Normal-duty)



Unit No.	Dimensions <sup>mm</sup> <sub>in.</sub>					Bearing No.	Housing No.	Weight (kg)
	d	a	g	r	B			
UKC205;H2305	20	80	22	2	35	UK205;H2305	C205	0.68
UKC205;HE2305	3/4	3.1496	55/64	0.079	1.378	UK205;HE2305		
UKC206;H2306	25	85	27	2	38	UK206;H2306	C206	0.84
UKC206;HS2306	7/8	3.3465	1-1/16	0.079	1.496	UK206;HS2306		
UKC206;HE2306	1					UK206;HE2306		
UKC207;H2307	30	90	28	2	43	UK207;H2307	C207	1.02
UKC207;HS2307	1-1/8	3.5433	1-7/64	0.079	1.693	UK207;HS2307		
UKC208;H2308	35	100	30	2.5	46	UK208;H2308	C208	1.32
UKC208;HE2308	1-1/4	3.9370	1-3/16	0.098	1.811	UK208;HE2308		
UKC208;HS2308	1-3/8					UK208;HS2308		
UKC209;H2309	40	110	31	2.5	50	UK209;H2309	C209	1.64
UKC209;HA2309	1-7/16	4.3307	1-7/32	0.098	1.969	UK209;HA2309		
UKC209;HE2309	1-1/2					UK209;HE2309		
UKC209;HS2309	1-5/8					UK209;HS2309		
UKC210;H2310	45					120	33	2.5
UKC210;HS2310	1-5/8	4.7244	1-19/64	0.098	2.165	UK210;HS2310		
UKC210;HA2310	1-11/16					UK210;HA2310		
UKC210;HE2310	1-3/4					UK210;HE2310		
UKC211;H2311	50					125	35	2.5
UKC211;HS2311	1-7/8	4.9213	1-3/8	0.098	2.323	UK211;HS2311		
UKC211;HA2311	1-15/16					UK211;HA2311		
UKC211;HE2311	2					UK211;HE2311		
UKC212;H2312	55					130	38	2.5
UKC212;HS2312	2-1/8	5.1181	1-1/2	0.098	2.441	UK212;HS2312		
UKC213;H2313	60	140	40	3	65	UK213;H2313	C213	2.89
UKC213;HA2313	2-3/16	5.5118	1-37/64	0.118	2.559	UK213;HA2313		
UKC213;HE2313	2-1/4					UK213;HE2313		
UKC213;HS2313	2-3/8					UK213;HS2313		

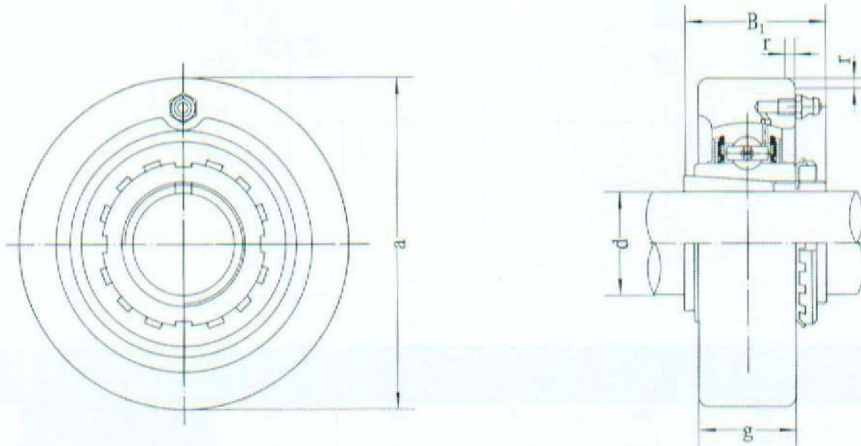




Unit No.	Dimensions <sup>mm</sup> <sub>in.</sub>						Bearing No.	Housing No.	Weight (kg)
	d	a	g	r	B	n			
UCCX05	25	90	27	2	38.1	15.9	UCX05	CX05	1.1
UCCX05-13	13/16						UCX05-13		
UCCX05-14	7/8	3.5433	1-1/16	0.079	1.5000	0.626	UCX05-14		
UCCX05-15	15/16						UCX05-15		
UCCX05-16	1						UCX05-16		
UCCX06	30	100	30	2.5	42.9	17.5	UCX06	CX06	1.6
UCCX06-17	1-1/16						UCX06-17		
UCCX06-18	1-1/8	3.9370	1-3/16	0.098	1.6890	0.689	UCX06-18		
UCCX06-19	1-3/16						UCX06-19		
UCCX06-20	1-1/4						UCX06-20		
UCCX07	35	110	34	2.5	49.2	19	UCX07	CX07	2.0
UCCX07-21	1-5/16						UCX07-21		
UCCX07-22	1-3/8	4.3307	1-11/32	0.098	1.9370	0.748	UCX07-22		
UCCX07-23	1-7/16						UCX07-23		
UCCX08	40	120	38	2.5	49.2	19	UCX08	CX08	2.5
UCCX08-24	1-1/2	4.7244	1-1/2	0.098	1.9370	0.748	UCX08-24		
UCCX08-25	1-9/16						UCX08-25		
UCCX09	45	120	38	2.5	51.6	19	UCX09	CX09	2.4
UCCX09-26	1-5/8						UCX09-26		
UCCX09-27	1-11/16	4.7244	1-1/2	0.098	2.0315	0.748	UCX09-27		
UCCX09-28	1-3/4						UCX09-28		
UCCX09-29	1-13/16						UCX09-29		
UCCX10	50	130	40	2.5	55.6	22.2	UCX10	CX10	3.0
UCCX10-30	1-7/8						UCX10-30		
UCCX10-31	1-15/16	5.1181	1-37/64	0.098	2.1890	0.874	UCX10-31		
UCCX10-32	2						UCX10-32		
UCCX11	55	150	42	3	65.1	25.4	UCX11	CX11	4.4
UCCX11-33	2-1/16						UCX11-33		
UCCX11-34	2-1/8						UCX11-34		
UCCX11-35	2-3/16	5.9055	1-21/32	0.118	2.5630	1.000	UCX11-35		
UCCX11-36	2-1/4						UCX11-36		
UCCX11-37	2-5/16						UCX11-37		
UCCX12	60	160	44	3	65.1	25.4	UCX12	CX12	5.0
UCCX12-38	2-3/8	6.2992	1-47/64	0.118	2.5630	1.000	UCX12-38		
UCCX12-39	2-7/16						UCX12-39		

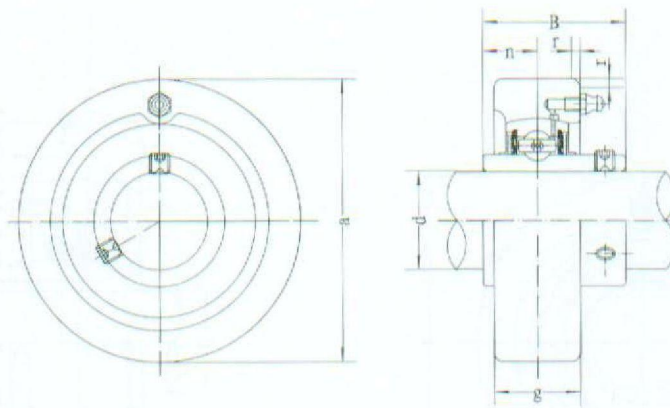
**Cartridge Units**  
(with adapter mounted)

**UKCX** (Medium-duty)



Unit No.	Dimensions <sup>mm</sup> <sub>in.</sub>					Bearing No.	Housing No.	Weight (kg)
	d	a	g	r	B <sub>1</sub>			
UKCX05;H2305	20	90	27	2	35	UKX05;H2305	CX05	0.99
UKCX05;HE2305	3/4	3.5433	1-11/16	0.079	1.378	UKX05;HE2305		
UKCX06;H2306	5	100	30	2.5	38	UKX06;H2306	CX06	1.3
UKCX06;HS2306	7/8	3.9370	1-3/16	0.098	1.496	UKX06;HS2306		
UKCX06;HE2306	1					UKX06;HE2306		
UKCX07;H2307	30	110	34	2.5	43	UKX07;H2307	CX07	1.7
UKCX07;HS2307	1-1/8	4.3307	1-11/32	0.098	1.693	UKX07;HS2307		
UKCX08;H2308	35	120	38	2.5	46	UKX08;H2308	CX08	2.3
UKCX08;HE2308	1-1/4	4.7244	1-1/2	0.098	1.811	UKX08;HE2308		
UKCX08;HS2308	1-3/8					UKX08;HS2308		
UKCX09;H2309	40	120	38	2.5	50	UKX09;H2309	CX09	2.3
UKCX09;HA2309	1-7/16					UKX09;HA2309		
UKCX09;HE2309	1-1/2	4.7244	1-1/2	0.098	1.969	UKX09;HE2309		
UKCX09;HS2309	1-5/8					UKX09;HS2309		
UKCX10;H2310	45	130	40	2.5	55	UKX10;H2310	CX10	2.8
UKCX10;HS2310	1-5/8					UKX10;HS2310		
UKCX10;HA2310	1-11/16	5.1181	1-37/64	0.098	2.165	UKX10;HA2310		
UKCX10;HE2310	1-3/4					UKX10;HE2310		
UKCX11;H2311	50	150	42	3	59	UKX11;H2311	CX11	3.8
UKPX11;HS2311	1-7/8					UKPX11;HS2311		
UKCX11;HA2311	1-15/16	5.9055	1-21/32	0.118	2.323	UKX11;HA2311		
UKCX11;HE2311	2					UKX11;HE2311		
UKCX12;H2312	55	160	44	3	62	UKX12;H2312	CX12	4.4
UKCX12;HS2312	2-1/8	6.2992	1-23/32	0.118	2.441	UKX12;HS2312		





Unit No.	Dimensions <sup>mm</sup> / <sub>in.</sub>						Bearing No.	Housing No.	Weight (kg)
	d	a	g	r	B	n			
UCC305	25	90	26	2.5	38	15	UC305		1.10
UCC305-13	13/16						UC305-13	C305	1.15
UCC305-14	7/8	3.5433	1-1/32	0.098	1.4961	0.591	UC305-14		1.13
UCC305-15	15/16						UC305-15		1.11
UCC305-16	1						UC305-16		1.10
UCC306	30	100	28	2.5	43	17	UC306		
UCC306-17	1-1/16						UC306-17	C306	1.45
UCC306-18	1-1/8	3.9370	1-7/64	0.098	1.6929	0.669	UC306-18		1.42
UCC306-19	1-3/16						UC306-19		1.40
UCC307	35	110	32	3	48	19	UC307		
UCC307-20	1-1/4						UC307-20	C307	1.86
UCC307-21	1-5/16	1.3307	1-1/64	0.118	1.8897	0.748	UC307-21		1.83
UCC307-22	1-3/8						UC307-22		1.80
UCC307-23	1-7/16						UC307-23		1.76
UCC308	40	120	34	3	52	19	UC308		
UCC308-24	1-1/2	4.7244	1-11/32	0.118	2.0472	0.748	UC308-24	C308	2.25
UCC308-25	1-9/16						UC308-25		2.21
UCC309	45	130	38	3.5	57	22	UC309		
UCC309-26	1-5/8						UC309-26	C309	2.81
UCC309-27	1-11/16	2.1181	1-1/2	0.138	2.441	0.866	UC309-27		2.77
UCC309-28	1-3/4						UC309-28		2.72
UCC310	50	140	40	3.5	61	22	UC310		
UCC310-29	1-13/16						UC310-29	C310	3.62
UCC310-30	1-7/8	5.118	1-37/64	0.138	2.4015	0.866	UC310-30		3.39
UCC310-31	1-15/16						UC310-31		3.33
UCC311	55	150	44	3.5	66	25	UC311		
UCC311-32	2						UC311-32	C311	1.08
UCC311-33	2-1/16	5.9055	1-47/64	0.138	2.5984	0.984	UC311-33		4.01
UCC311-34	2-1/8						UC311-34		3.95
UCC311-35	2-3/16						UC311-35		3.87
UCC312	60	160	46	3.5	71	26	UC312		
UCC312-36	2-1/4						UC312-36	C312	4.95
UCC312-37	2-5/16	6.2992	1-13/16	0.138	2.7953	1.024	UC312-37		4.87
UCC312-38	2-3/8						UC312-38		4.78
UCC312-39	2-7/16						UC312-39		4.70
UCC313	65	170	50	3.5	75	30	UC313		
UCC313-40	2-1/2						UC313-40	C313	5.89
UCC313-41	2-9/16	6.8929	1-31/32	0.138	2.9528	1.181	UC313-41		5.89
UCC314	70	180	52	4	78	33	UC314		
UCC314-42	2-5/8						UC314-42	C314	6.82
UCC314-43	2-11/16	7.0866	2-3/64	0.157	3.0709	1.299	UC314-43		6.71
UCC314-44	2-3/4						UC314-44		6.61
UCC315	75	190	55	4	82	32	UC315		
UCC315-45	2-13/16						UC315-45	C315	8.07
UCC315-46	2-7/8	7.4803	2-11/64	0.157	3.2288	1.260	UC315-46		7.93
UCC315-47	2/15/16						UC315-47		7.84
UCC315-48	3						UC315-48		7.71
UCC316	80	200	60	4	86	34	UC316		
UCC316-49	3-1/16						UC316-49	C316	9.22
UCC316-50	3-1/8	7.8740	2-23/64	0.157	3.3858	1.339	UC316-50		9.08
UCC316-51	3-3/16						UC316-51		8.99
UCC317	85	215	64	4	96	40	UC317		
UCC317-52	3-1/4						UC317-52	C317	11.19
UCC317-53	3-5/16	8.4646	2-33/64	0.157	3.7795	1.575	UC317-53		11.06
UCC317-54	3-7/16						UC317-54		10.74
UCC318	90	225	66	4	96	40	UC318		11.96
UCC318-55	3-7/16	8.8583	2-19/32	0.157	3.7795	1.575	UC318-55	C318	12.25
UCC318-56	3-1/2						UC318-56		12.07
UCC319	95	240	72	4	103	41	UC319		15.00
UCC319-58	3-5/8						UC319-58	C319	15.33
UCC319-59	3-11/16	9.4488	2-53/64	0.157	4.0551	1.614	UC319-59		15.15
UCC319-60	3-3/4						UC319-60		14.96
UCC320	100	260	75	4	108	42	UC320		
UCC320-64	4	10.2382	2-61/64	0.157	4.2519	1.845	UC320-64	C320	19.4
UCC322	110	300	80	5	117	46	UC322		
UCC322		11.8110	3-2/32	0.197	4.6063	1.811			
UCC324	120	320	90	5	126	51	UC324		35.9
UCC324		2.5984	3-35/64	0.197	4.9606	2.008			
UCC326	130	340	100	5	135	54	UC326		43.0
UCC326		13.3858	3-15/16	0.197	5.3150	2.126			
UCC328	140	360	100	5	145	59	UC328		52.9
UCC328		14.1732	3-15/16	0.197	5.7086	3.323			